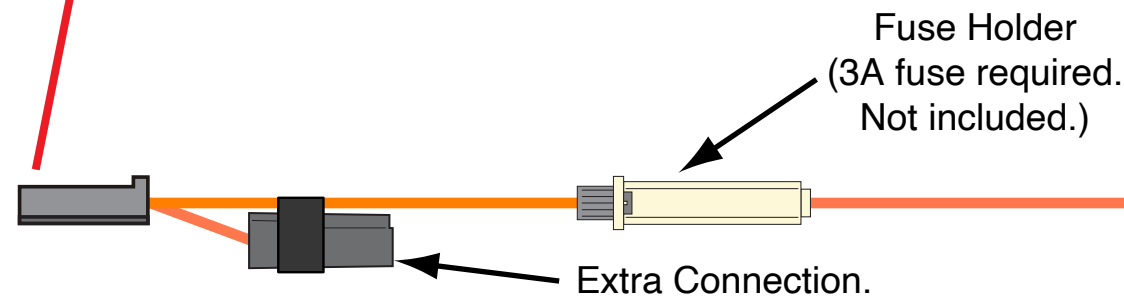
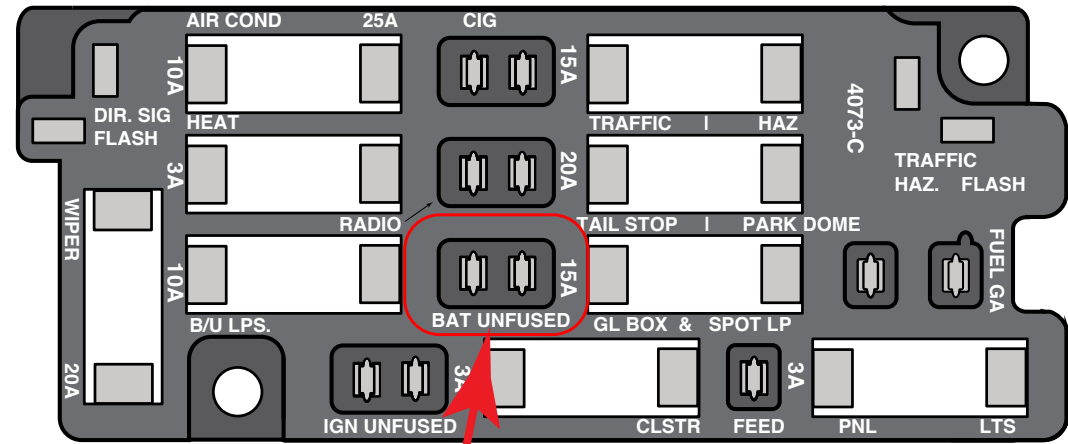


Fuse Panel:

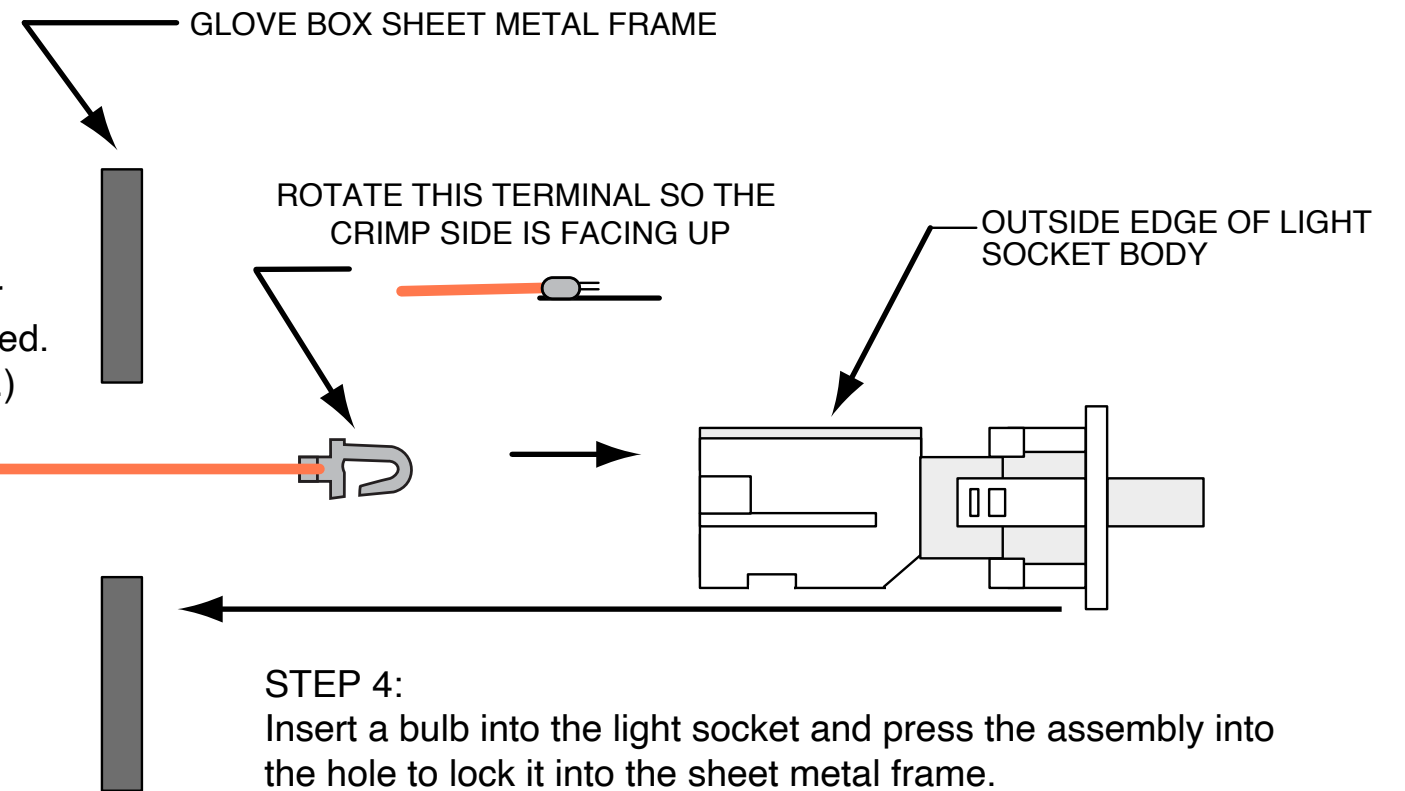
(1967-68 fuse panel shown, 1969-72 will be similar)



STEP 1:
 Plug the connector end of the orange wire into a free "BAT UNFUSED" port on the fuse panel. If there are no empty ports on your fuse panel, you may need to remove the existing wire what is plugged into one of the battery ports and plug it into the "Extra Connection" jumper, freeing up the port for this glove box light harness.

STEP 2:
 Route the bare metal terminal end of wire assembly from the fuse panel, along the firewall behind the dash to the glove box area

STEP 3:
 Route bare metal terminal and wire through the courtesy light hole in the glove box frame. Position the wire and glove box light assembly as shown below. Insert the terminal into glove box light socket with the wire crimp facing up, towards the outside edge of the light socket.



STEP 4:
 Insert a bulb into the light socket and press the assembly into the hole to lock it into the sheet metal frame.



www.americanautowire.com 856-933-0801

PART #: 23190
 GLOVE BOX LIGHT TRUCK

92964513 Rev 1.0 5/31/2024